



# MEMBERSHIP NEWSLETTER

## SPRING/SUMMER 2026

### IN THIS ISSUE

- Annual Membership Meeting**
- Brewmasters Vintage Base Ball**
- Garden Walk**
- Summer Concerts**
- Sanders School Tour**
- Albee House Restoration Updates**



## ANNUAL MEMBERSHIP MEETING

BIHS Board Member Joe Leamanczyk and partner Ben Walker have been generous enough to host our Annual Meeting for the past several years, and we'll be able to relax on their porch again while we recap the past year's accomplishments and activities, discuss our plans for the next 12 months, address member comments and concerns, and enjoy refreshments and company.

June 28 at 1 p.m.

12905 Greenwood Ave, Blue Island, IL

*Only current BIHS members can attend. Have a question about your membership status? Email us at [info@bihistoricalsociety.org](mailto:info@bihistoricalsociety.org).*

# 🏠 BREWMASTERS VINTAGE BASE BALL 🏠

## **The 2026 season is underway!**

The Blue Island Brewmasters return for their eighth season of vintage base ball... **HUZZAH!** Just bring a blanket or folding chairs to our home games and enjoy baseball the way it was played in 1858.

### **Home Games:**

June 20 at 2 p.m. against the Deep River Grinders  
Memorial Park: 12804 Highland Ave, Blue Island, IL 60406

July 19 at 2 p.m. against the Flossmoor Whistlestoppers  
Memorial Park: 12804 Highland Ave, Blue Island, IL 60406

July 26 at 1 p.m. against the Creston Regulators  
Memorial Park: 12804 Highland Ave, Blue Island, IL 60406

August 29 at 1 p.m. against the Valparaiso Lookouts  
Memorial Park: 12804 Highland Ave, Blue Island, IL 60406

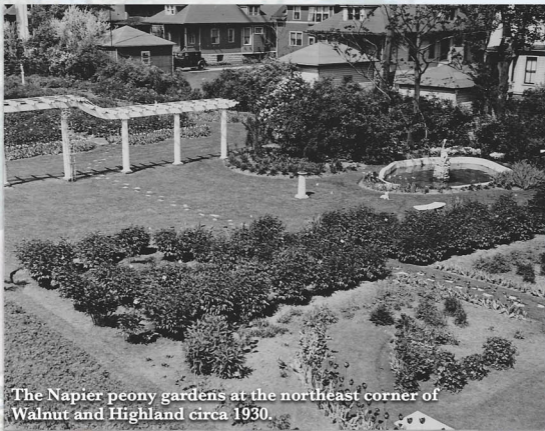
October 4 at 2 p.m. against the Chicago Salmon  
Memorial Park: 12804 Highland Ave, Blue Island, IL 60406

### **Road Games (Remaining):**

August 16 against the Chicago Salmon  
Location & time TBA

September 12 at 1 p.m. against the Lemont Quarrymen  
Location TBA





The Napier peony gardens at the northeast corner of Walnut and Highland circa 1930.

## GARDEN WALK

We're bringing back the Garden Walk to celebrate some of the beautiful outdoor spaces found throughout Blue Island! We're so excited to partner with the Blue Island Arts Alliance and the Blue Island Forestry Board on this event, and we're currently looking for gardens to add to it. If you or someone you know may be interested in participating, please reach out to us by sending an email ([info@bihistoricalsociety.org](mailto:info@bihistoricalsociety.org)) or calling 708-371-8546.

July 25 at 1 p.m. (Rain date of July 26 at 1 p.m.)

Begins at the Albee House: 13018 Maple Ave, Blue Island, IL  
\$35 per ticket (Free for children 12 and under)

Check [BIHistoricalSociety.org](http://BIHistoricalSociety.org) for updates



## ✦ SUMMER CONCERTS ✦

Enjoy great music at 2 historic homes in Blue Island later this summer! In August, we'll host what's become an annual tradition: an exclusive backyard concert at BIHS member Jim Walsh's landmark Ward & Florence Seyfarth House, followed by a Porch Concert in Blue Island's beautiful Silk Stocking District at the landmark Col. W.A. Ray House in September.

**Backyard Concert:** August 15 at 7 p.m. (Rain date Aug. 16)  
2523 High Street, Blue Island  
\$10 suggested donation

**Porch Concert:** September 12 at 7 p.m. (Rain date Sept. 13)  
12738 Maple Avenue, Blue Island  
\$25 per ticket

LEARN MORE AND PURCHASE TICKETS  
AT [BIHISTORICALSOCIETY.ORG](http://BIHISTORICALSOCIETY.ORG)

## SANDERS SCHOOL TOUR

On May 31, we partnered with the City of Blue Island and The George W. Maher Society to host an exclusive tour of Sanders School's interior - the first time the building on Blue Island's East Side had been open to the public for roughly 40 years.

The program began with a short lecture from BIHS Official Historian and Chairman of the Board of The George W. Maher Society, Ken Jellema. Guests were treated to a fascinating history of the building; its namesake, Benjamin Sanders; and its architect, George W. Maher. Following the lecture, Ken and BIHS Executive Director Kevin Brown led a tour through the building, explaining how it's evolved over the years, pointing out architectural details, and expressing their optimism for the building's adaptive reuse.

